

For line Allen's Avenue see W. & E.

Providence R. I.
This plat accompanies
our report of this date.

PROVIDENCE, R. I.
CITY ENGINEER'S OFFICE
STREET LINE DEPT.

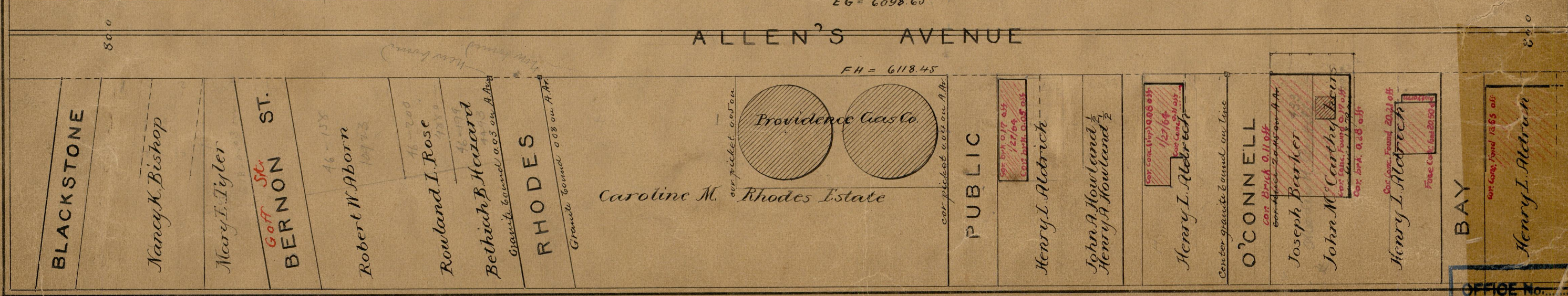
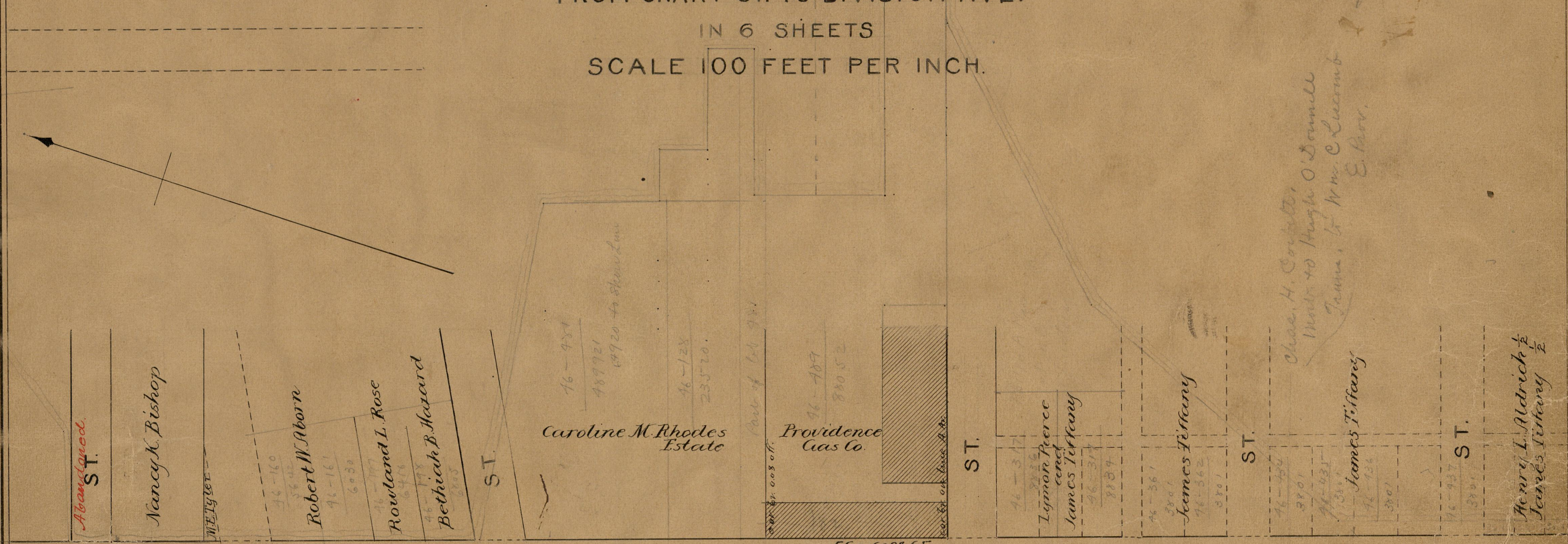
PLAT OF ALLEN'S AVENUE

FROM CRARY ST. TO DIVISION AVE.
IN 6 SHEETS
SCALE 100 FEET PER INCH.

Feb. 25, 1888
013584

Card out Aug 2, 1888.

*Chas. H. Conditto,
Master to Hugh O'Donnell
James, to Wm. C. Loomis
E. Prov.*



OFFICE No. 9475
DRAWER 83
SHEET 73

83
A-73